



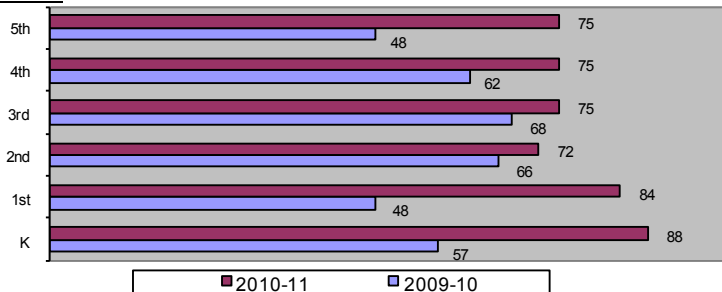
Edison Elementary School Annual Report 2010-2011

740 Magnolia Parkway ♦ Waterloo, IA 50701 Phone: 319-433-2180 ♦ Fax: 319-433-2187
Email: Steggallm@waterloo.k12.ia.us ♦ http://www.waterloo.k12.ia.us/schoolsites/edison/

Message from the Principal: Melissa Steggall

Edison Elementary is a child-centered school with a well-trained and motivated staff that provides the highest quality education for the students. The students will develop mental, physical, and social foundations that will enable them to function as responsible, active, lifelong learners in an ever-changing multicultural environment. Edison School has a population of 390 students in grades PK-5 and two preschools serving the population. Support for the students comes from an experienced and dedicated teaching and support staff. The Edison Parent and Teacher Organization Site Council is also supportive of the school mission and vision. They provide monetary and volunteer resources and have monthly activities for the Edison families. The school also benefits from strong community involvement through our Partner in Education Program, Mentoring Program, and our Golden Apple Volunteer Program.

Enrollment



Partners in Education

Partners in Education is a school-business partnership program that matches community organizations with schools to enhance academic and social growth.

The following businesses are Edison Elementary's Partners in Education:

- Qwest
- Iowa Department of Correctional Services
- Iowa Community Credit Union
- Communications Workers of America
- Waterloo-Cedar Falls Symphony
- National Association of Letter Carriers Branch 512
- Friendship Village
- Waterloo AMVETS Post No. 19
- Sigma Phi Epsilon
- University of Northern Iowa
- MidAmerican Energy
- Cedar Falls Lutheran Home
- Staples
- The Rose of Waterloo
- Maple Lanes

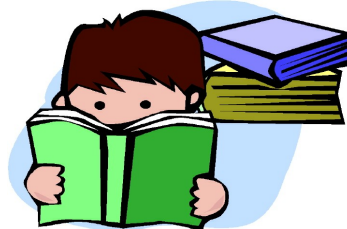
2010-2011 Average Class Size

	K	1st	2nd	3rd	4th	5th
Edison Elementary	17.6	20.8	23.7	18.3	22.3	22.0
District Elementary	20.2	21.1	21.1	22.0	22.4	23.3

Average Daily Attendance

Students

Edison Elementary	95.83%
District Elementary	95.54%

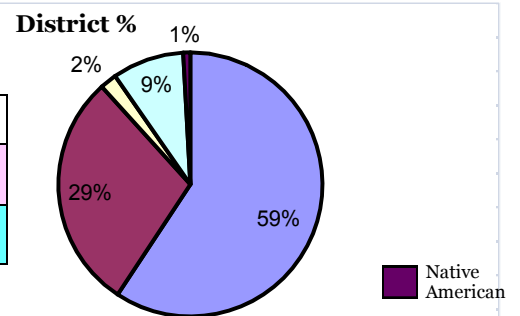


Building Staff

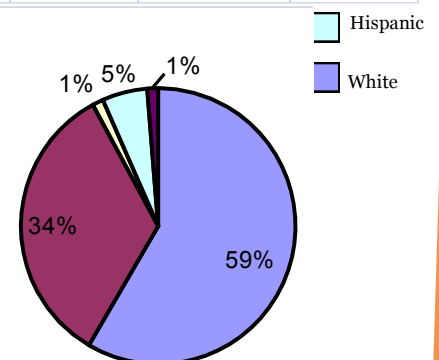
<u>Licensed Professionals</u>	<u>Support Staff</u>
32	16
<u>Licensed Professional</u>	<u>Staff to Student Ratio</u>
1:11.7	1:11.8
Edison	District



Diversity



Edison %



Conference Attendance

By Parents

	08-09	09-10	10-11
Edison	84.0%	80.0%	83.5%

Free or Reduced Lunch Eligibility

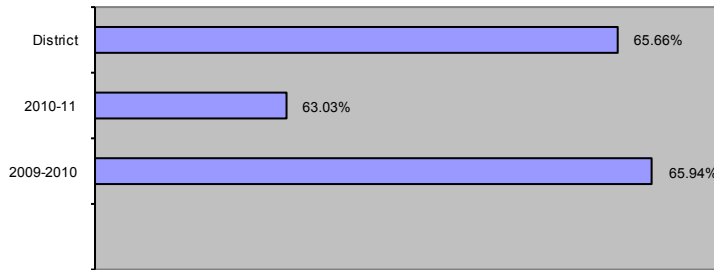
Edison Elementary	73.85%
District Average	62.03%

Student Mobility

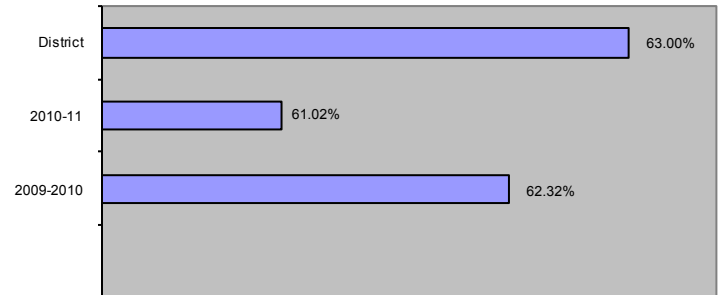
Students entering after Aug. 31, 2010 or leaving before May 30, 2011.

Edison Elementary	14.2%
District Elementary	13.58%

Reading Comprehension % Proficient



Math Comprehension % Proficient



Reading and Math Proficiency

Figures are based on average percent for grades 3-5. Students who score at or above the 41st percentile on the ITBS are considered "proficient." Our goal is to continue to increase the percentage of our students who meet this minimum standard.

Edison 2010-2011 Goal Report

Math Goals:

- The number of 3rd, 4th, and 5th graders who are proficient in reading comprehension on the fall ITBS will increase by 5%.
- The number of minority 3rd, 4th, and 5th graders who are proficient in reading comprehension on the fall ITBS will increase by 5%.

Reading Goals:

- The number of 3rd, 4th, and 5th graders who are proficient in math on the ITBS will increase by 5% as measured on the Fall 2009 ITBS math test.
- The number of minority 3rd, 4th, and 5th graders who are proficient in math on the ITBS will increase by 5% as measured on the Fall 2009 ITBS math test.



Mission of the Waterloo Community Schools

The Waterloo Schools community commits to a comprehensive system of education and support to assure that each and every student will graduate prepared for college, career, and citizenship as evidenced by continuing education, pursuing a career path, and contributing to a community.



WATERLOO
Community School District

Engaged in Learning • Prepared for Success

Special Programs and Initiatives

- Extended day tutoring
- UNI students assist in the classrooms as part of the Teacher preparation programming
- Special Needs programming and services
- Title One programs-including Reading Recovery
- State of the art computer lab
- Internet connections and computers in each classroom
- YMCA & YWCA extended care program
- Girl and Boy Scouts
- Leather's Playground (Eagle Island)
- Pre-K classrooms
- Leader In Me