



# Expo High School Annual Report 2010-2011

927 Franklin Street ♦ Waterloo, IA 50703 Phone: 319-433-1930 ♦ Fax: 319-433-1933  
Email: Shaversb@waterloo.k12.ia.us ♦ http://www.waterloo.k12.ia.us/schoolsites/expo/

## Message from the Principal: Brenton Shavers

Welcome to the Expo Alternative Learning Center!

The goal of Alternative Education in the Waterloo Community School District is to provide our students with individualized learning opportunities that address their educational needs in a safe and nurturing environment.

At the Expo Alternative Learning Center, we believe that all of our students are capable of learning in our small learning community. We strive to provide our students with the highest quality of instruction based on proven practice and research. We use data to drive our instruction to determine which students may need supplemental and intensive supports. We work diligently to ensure that our students receive the education they will need to become strong members of the community. We have a highly qualified and progressive teaching staff that is committed to providing our students with relevant and rigorous instruction through the use of technology and community resources. We work hard to reach each student academically as well as socially and emotionally.  
(continued on back)

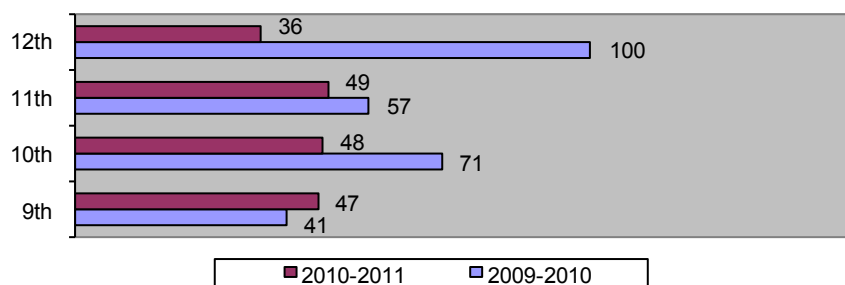
## Partners in Education

Partners in Education is a school-business partnership program that matches community organizations with schools to enhance academic and social growth.

The following businesses are Expo High's Partners in Education:

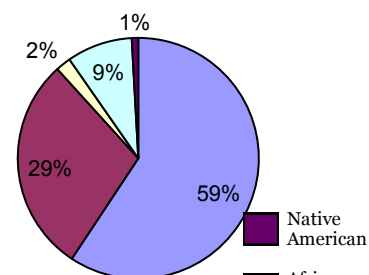
- YWCA
- Consumer Credit Counseling Service of NE Iowa
- Waterloo Exchange Club
- Sunrise Exchange Club
- Peoples Community Health Clinic
- First Presbyterian Church
- Waterloo Business & Professional Women

## Enrollment

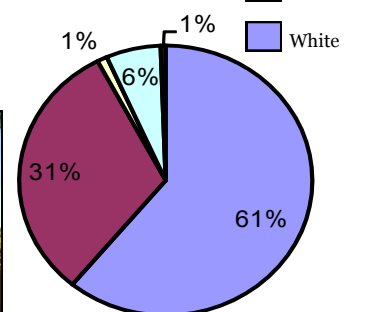


## Diversity

District %



Expo %



## Building Staff

Licensed Professionals	Support Staff
22	28
Licensed Professional	Staff to Student Ratio
1:12.1	1:13.4
Expo High	District

## Average Daily Attendance

### Students

Expo High School	74.40%
District High School	90.54%



**"If my mind can conceive it, and my heart can believe it,  
I know I can achieve it!"**

The Expo Alternative Learning Center has six educational programs within a single school building.

- **Expo Alternative High School** is designed to educate students in danger of failing and/or dropping out of school for various reasons. Expo Alternative High School provides a unique approach by utilizing technology to enhance instruction. Teachers are assigned to students and meet daily the entire length of the student's enrollment in order to create meaningful relationships with the student, their families, support networks, and any other significant adults in their lives.
- The **Graduation Connection (Grad Connect)** is an individualized credit recovery program for various identified students on a graduation plan who need additional credits in order to graduate. Students apply through their home school counselor/administrator and attend at a designated time, Monday through Thursday. Students sign an individualized contract based on their graduation plan and are required to make steady progress toward completion of that contract.
- The **WEBC Program** educates students from middle and high schools who are demonstrating behaviors that distract them from the learning environment. Students assigned to this program have varied lengths of stay and have to demonstrate the ability to responsibly manage their behavior prior to transitioning back to their home school or district.
- The **Bridge Program** works with 8<sup>th</sup> grade students from the four area middle schools who are at-risk of failing and/or possibly being retained. Students are referred to this program by their home school administrator and/or counselor.
- The **STAR-C Program** specializes in educating special needs students in grades 6<sup>th</sup>-12<sup>th</sup> who have significant behavior concerns. Students must be staffed into the program by recommendation of the home school IEP Team.
- The **Transition Alliance Program (TAP)** develops and implements a new pattern of service to youth with disabilities. The goal is to increase successful employment through collaborative efforts. Students participating in TAP are referred by their home school IEP Team based on their needs in developing skills to be successful in obtaining, maintaining, and regaining employment.

Thank you for taking the time to read this newsletter and feel free to visit our school and experience our positive atmosphere for yourself.

### Conference Attendance

#### By Parents

08-09 09-10 10-11

Expo High 34.0% 24.0% 70.0%

### Free or Reduced Lunch Eligibility

Expo High School	52.55%
District Average	62.03%

### 2010-2011 Average Class Size

	Combined Core
Expo High School	19.5
District High School	23.6

## Expo 2010-2011 Goal Report

### Reading Goal:

**89.7 % of the students in Expo High School will be proficient as measured by ITED's and other standardized assessments**

### Math Goal:

**89.7 % of the students in Expo will be proficient as measured by ITED's and other standardized assessments**

### Writing Goal:

**To provide additional writing opportunities by ensuring all teachers incorporate writing into their content areas.**

### Climate/Culture Goal:

**90% of all Expo Alternative Learning Center students will be successful as measured by behavioral success indicators**



**WATERLOO**  
Community School District

Engaged in Learning • Prepared for Success

## Waterloo Community Schools

### **Mission**

The Waterloo Schools community commits to a comprehensive system of education and support to assure that each and every student will graduate prepared for college, career, and citizenship as evidenced by continuing education, pursuing a career path, and contributing to a community.

### **Strategic Focus Areas and Objectives**

#### **Student Achievement and Development:**

Delivering the comprehensive curriculum through engaging instruction with a focus on measured results for student achievement.

#### **Human Assets:**

Staffing our organization with high performing leaders, teams, and employees.

#### **Community Engagement:**

Interacting effectively with our students, staff, parents, and business communities.

#### **Financial Sustainability and Operational Excellence:**

Operating with fiscal integrity, efficiency, and effectiveness.

#### **Climate for Learning:**

Provide a safe, caring, engaging, and inviting environment for our students, staff, parents, and community.