

Highland Elementary School Annual Report 2010-2011

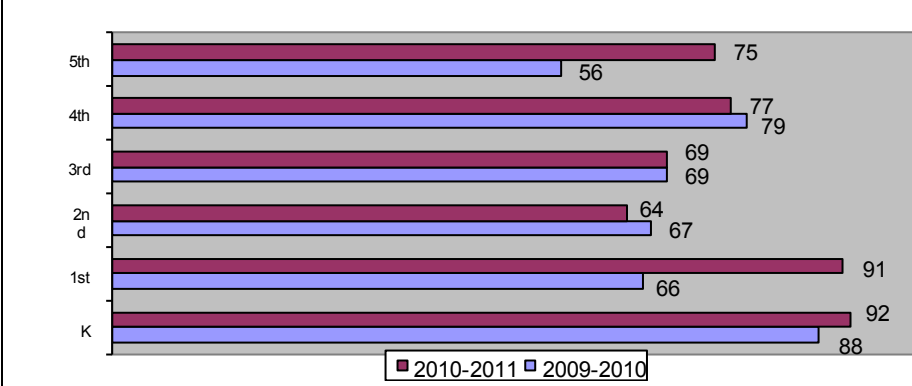


812 Idaho Street ◊ Waterloo, IA 50703 Phone: 319-433-2630 ◊ Fax: 319-433-2633
Email: WagnerMJ@waterloo.k12.ia.us ◊ <http://mckinstry.waterloo.iowapages.org/>

Message from the Principal: Mary Jo Wagner

In January 2010, McKinstry Elementary moved into a new elementary school facing Idaho Street and changed our name to Highland Elementary. As one of Waterloo's larger elementary schools, it serves a richly diverse community of 400+ students PreK-5 each year. Highland is a Positive Behavior Intervention Supports school. At Highland, we strive to welcome, honor, and connect with families and the community, building positive relationships as we work in partnership to provide a quality education for all of our students.

Enrollment



2010-2011 Average Class Size

	K	1st	2nd	3rd	4th	5th
Highland Elementary	22.0	20.0	19.3	20.7	24.0	23.0
District Elementary	20.0	21.1	21.1	22.0	22.4	23.3



Building Staff

<u>Licensed Professionals</u>	<u>Support Staff</u>
44	24
<u>Licensed Professional</u>	<u>Staff to Student Ratio</u>
1:10.9	1:11.8
Highland	District

Partners in Education

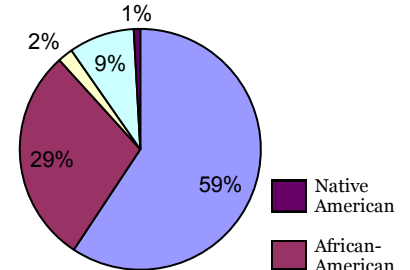
Partners in Education is a school-business partnership program that matches community organizations with schools to enhance academic and social growth.

The following businesses are Highland Elementary's Partners in Education:

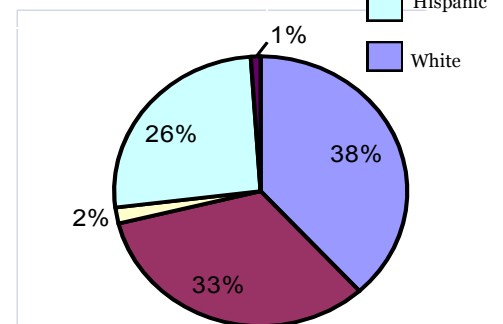
- Breadth of Life Foursquare Church
- John Deere Waterloo Works
- Lincoln Savings Bank
- Nazareth Lutheran Church
- Petersen and Tietz Florist and Greenhouse
- Trinity Episcopal Church

Diversity

District %



Highland %



Average Daily Attendance

Students	Percentage
Highland Elementary	95.14%
District Elementary	95.54%

Conference Attendance

By Parents

08-09 09-10 10-11

Highland 91.0% 94.5% 89.0%

Free or Reduced

Lunch Eligibility

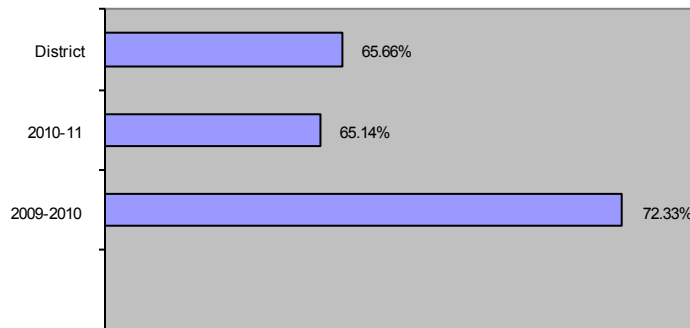
Highland Elementary	82.07%
District Average	62.03%

Student Mobility

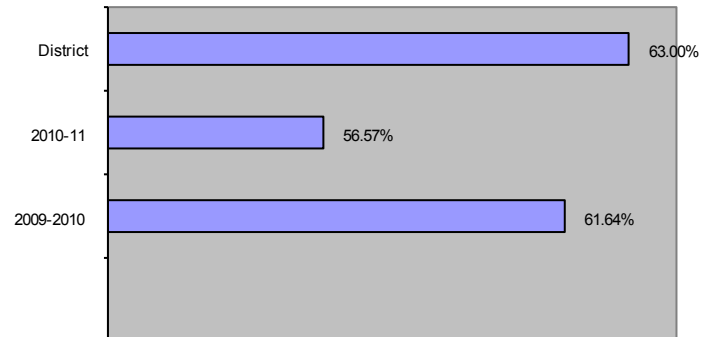
Students entering after Aug. 31, 2010 or leaving before May 30, 2011.

Highland Elementary	18.40%
District Elementary	13.58%

Reading Comprehension % Proficient



Math Comprehension % Proficient



Reading and Math Proficiency

Figures are based on average percent for grades 3-5. Students who score at or above the 41st percentile on the ITBS are considered "proficient." Our goal is to continue to increase the percentage of our students who meet this minimum standard.

Waterloo Community Schools

Mission

The Waterloo Schools community commits to a comprehensive system of education and support to assure that each and every student will graduate prepared for college, career, and citizenship as evidenced by continuing education, pursuing a career path, and contributing to a community.

Strategic Focus Areas and Objectives

Student Achievement and Development:

Delivering the comprehensive curriculum through engaging instruction with a focus on measured results for student achievement.

Human Assets:

Staffing our organization with high performing leaders, teams, and employees.

Community Engagement:

Interacting effectively with our students, staff, parents, and business communities.

Financial Sustainability and Operational Excellence:

Operating with fiscal integrity, efficiency, and effectiveness.

Climate for Learning:

Provide a safe, caring, engaging, and inviting environment for our students, staff, parents, and community.

Highland 2010-2011 Goal Report

By the end of the 2010-2011 school year, the number of students who are proficient in grades 3-5 will increase by 10% in reading comprehension as defined by the Iowa Test of Basic Skills and/or Annual Yearly Growth.

By the end of the 2010-2011 school year, the number of students who are proficient in grades 3-5 will increase by 10% in total math as defined by the Iowa Test of Basic Skills and/or Annual Yearly Growth.

Highland Special Offerings and Programs

- Positive Behavior Supports Site
- Monthly WOW! Celebrations
- Healthy Snacks Nutrition Program
- Nationally Accredited (NAEYC) Preschool Programs
- Kindergarten Literacy Program
- Parent Involvement/Family support Activities
- Volunteers and Reading/Literacy Buddies
- Partners-in-Education
- After-school day care provided by the YWCA



WATERLOO
Community School District

Engaged in Learning • Prepared for Success