

Kittrell Elementary School Annual Report 2010-2011



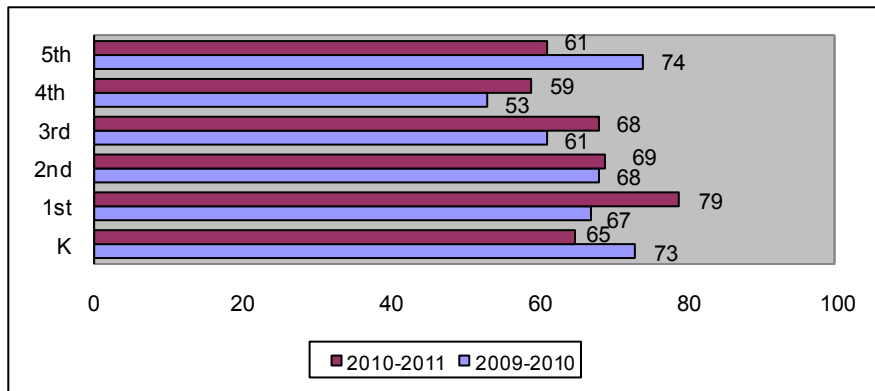
1520 Easton Avenue ♦ Waterloo, IA 50702 Phone: 319-433-2910 ♦ Fax: 319-433-2016
Email: wallicangreena@waterloo.k12.ia.us ♦ http://kittrell.waterloo.k12.ia.us

Message from the Principal: Audrey Wallican-Green

The Kittrell community feels that a positive and safe school climate is critically important in order for children to succeed. Kittrell Staff is dedicated to efforts that will minimize distractions, while preserving a nurturing environment that meets the needs of the whole child. Our school is a diverse community that strives to meet individual differences and abilities in a positive learning environment. We take pride in developing good character in our students. We are a PBIS school and focus on building respectful, responsible and students who are concerned about the safety of our school and their peers.

Kittrell has knowledgeable, well-trained, experienced, and skillful teachers who are dedicated and care about students. Our staff encourages students to learn with enthusiasm, interest, and commitment while providing high quality education. Kids are # 1. Our community consists of a dedicated PTO, PIE, and parents who are essential to student achievement. Kittrell is home of the Cougars.

Enrollment



2010-2011 Average Class Size

	K	1st	2nd	3rd	4th	5th
Kittrell Elementary	20.0	25.3	22.0	22.0	19.3	30.0
District Elementary	20.2	21.1	21.1	22.0	22.4	23.3

Average Daily Attendance

Students

Kittrell Elementary	96.08%
District Elementary	95.5%



Partners in Education

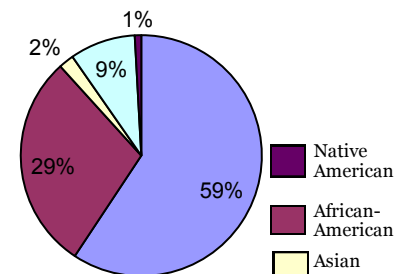
Partners in Education is a school-business partnership program that matches community organizations with schools to enhance academic and social growth.

The following businesses are Kittrell Elementary's Partners in Education:

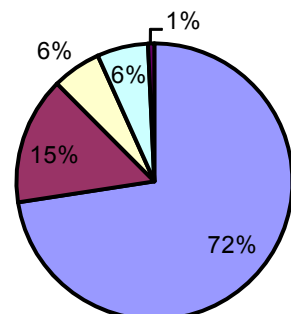
- Veridian Credit Union
- Target
- Optimist Club
- InVision Architecture Ltd.
- Olive Garden Restaurant
- Bonanza Family Restaurant
- American Cancer Society
- Immanuel Presbyterian Church
- Hammond Avenue Brethren Church
- Ridgeway Place
- Old Navy
- The Other Place

Diversity

District %



Kittrell %



Conference Attendance

By Parents

	<u>08-09</u>	<u>09-10</u>	<u>10-11</u>
Kittrell	95.5%	93.0%	94.0%

Free or Reduced Lunch Eligibility

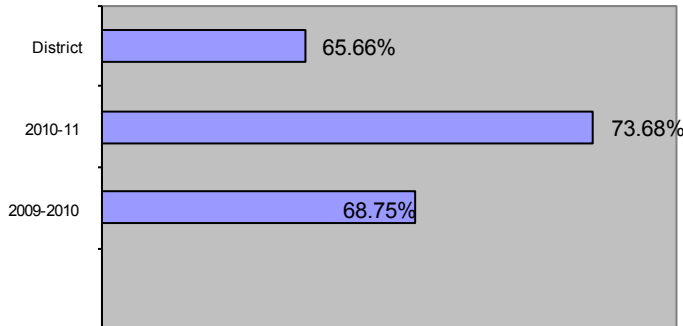
Kittrell Elementary	58.86%
District Average	62.03%

Student Mobility

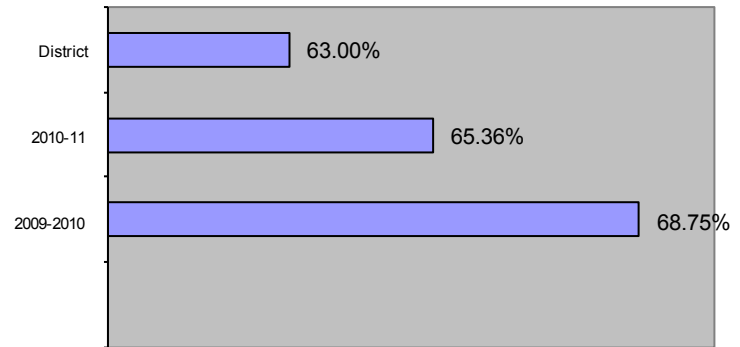
Students entering after Aug. 31, 2010 or leaving before May 30, 2011.

Kittrell Elementary	15.70%
District Elementary	13.58%

Reading Comprehension % Proficient



Math Comprehension % Proficient



Reading and Math Proficiency

Figures are based on average percent for grades 3-5. Students who score at or above the 41st percentile on the ITBS are considered "proficient." Our goal is to continue to increase the percentage of our students who meet this minimum standard.

Waterloo Community Schools

Mission

The Waterloo Schools community commits to a comprehensive system of education and support to assure that each and every student will graduate prepared for college, career, and citizenship as evidenced by continuing education, pursuing a career path, and contributing to a community.

Strategic Focus Areas and Objectives

Student Achievement and Development:

Delivering the comprehensive curriculum through engaging instruction with a focus on measured results for student achievement.

Human Assets:

Staffing our organization with high performing leaders, teams, and employees.

Community Engagement:

Interacting effectively with our students, staff, parents, and business communities.

Financial Sustainability and Operational Excellence:

Operating with fiscal integrity, efficiency, and effectiveness.

Climate for Learning:

Provide a safe, caring, engaging, and inviting environment for our students, staff, parents, and community.

Building Staff

Licensed Professionals

37

Licensed Professional

1:11.

Kittrell

Support Staff

19

Staff to Student Ratio

1:11.8

District

Programs Offered to Students

- Take Charge of Your Body
- Athletic Club
- Student Council
- Junior Achievement
- Say No to Drugs-program/Fire Pals
- Yearbook Club
- UNI Literacy Program
- ISU Extension and Partner Pen Pals
- YWCA
- ELP
- PBIS
- UNI Methods Students
- School-wide Title I
- Mentors/volunteers
- Committed PTO and PIE
- PBIS Celebrations
- Assist with Pledge
- Fifth Grade S. Patrol
- Pre-K

The PTO (Parents and Teacher Organization) works to support the student through community and school-wide activities and fund-raising events. The Site Council is a group comprised of parents and teachers who systematically and purposely integrate efforts to change conditions and practices in the school to increase achievement and success for all students. Classroom or Lunchroom volunteers comprised of parents, retired citizens, PIE members and others, willingly donate time to assist students in their learning journeys.