

Lowell Elementary School Annual Report 2010-2011



1628 Washington Street ◊ Waterloo, IA 50702 Phone: 319-433-1900 ◊ Fax: 319-433-1905
Email: DietzA@waterloo.k12.ia.us ◊ http://lowell.waterloo.k12.ia.us

Message from the Principal: Amber Dietz

Mission: Our Mission at Lowell Elementary is to develop contributing members of society through increased levels of academic achievement as determined by district and states standards to ensure student success.

Welcome to Lowell Elementary! As you can see, we have a very diverse student body at Lowell and we take time to celebrate these differences as often as possible! In this diverse environment, we strive to meet individual differences and abilities in a positive learning environment. Our staff is eager to go above and beyond to meet the needs of students. We are working diligently to provide a safe, caring, and inviting environment for students and families.

We prize the dedicated support of our PTO and PIE. Without the sense of community, we would be unable to meet our goals!

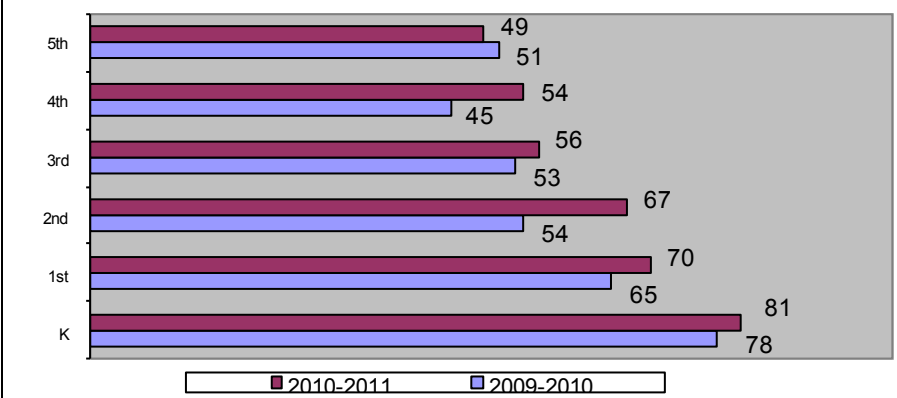
Partners in Education

Partners in Education is a school-business partnership program that matches community organizations with schools to enhance academic and social growth.

The following businesses are Lowell Elementary's Partners in Education:

- Grace Brethren Church
- Grainger
- First Wesleyan Church
- Cornerstone Fellowship Church
- Northeast Iowa Family Practice Center
- Lincoln Savings Bank
- Cadillac Lanes
- Delta Sigma Theta Sorority
- Country View
- Black Hawk County
- Nestle Corporation
- Hoorace Mann

Enrollment



2010-2011 Average Class Size

	K	1st	2nd	3rd	4th	5th
LowellElementary	19.0	21.7	19.7	26.0	22.5	24.5
District Elementary	20.2	21.1	21.1	22.0	22.4	23.3



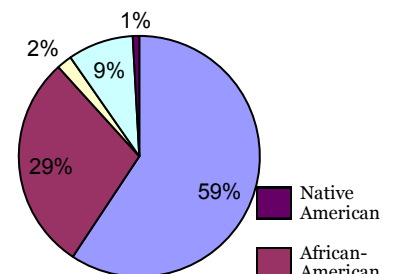
Average Daily Attendance

Students

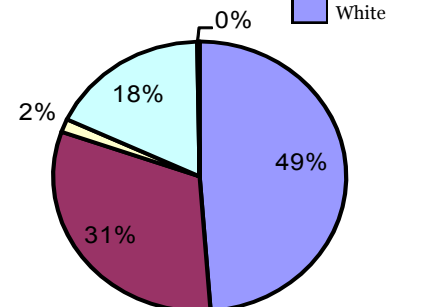
Lowell Elementary	94.5%
District Elementary	95.5%

Diversity

District %



Lowell %



Conference Attendance

By Parents

08-07 09-08 10-11

Lowell 87.0% 95.0% 94.0%

Free or Reduced Lunch Eligibility

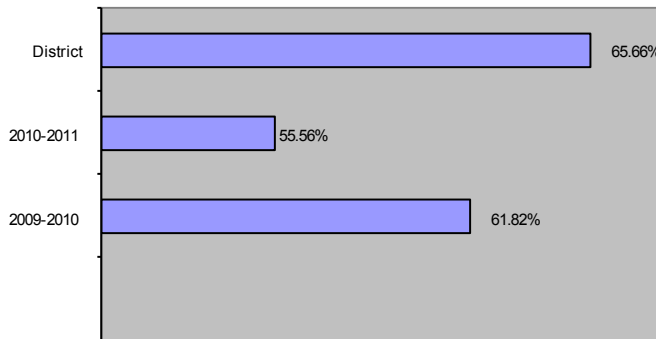
Lowell Elementary	85.64%
District Average	62.03%

Student Mobility

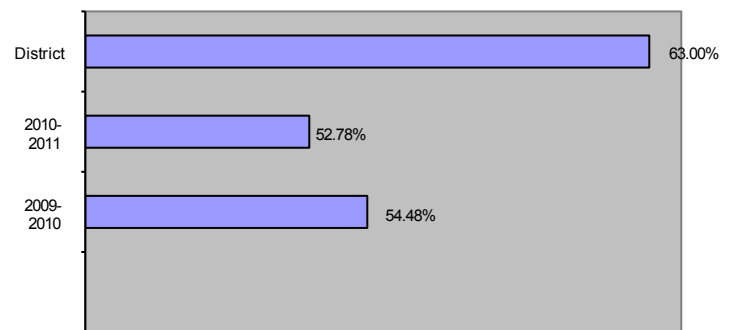
Students entering after Aug. 31, 2010 or leaving before May 30, 2011.

Lowell Elementary	19.8%
District Elementary	13.58%

Reading Comprehension % Proficient



Math Comprehension % Proficient



Reading and Math Proficiency

Figures are based on average percent for grades 3-5. Students who score at or above the 41st percentile on the ITBS are considered "proficient." Our goal is to continue to increase the percentage of our students who meet this minimum standard.

Lowell 2010-2011 Goal Report

Reading Goals:

- The percent of students in grades 3-5 will increase to 82% proficient on Reading Comprehension and Vocabulary on the Iowa Test of Basic Skills.
- All students in grades K-5 will be proficient on the DRA2 spring assessment.

Math Goals:

- The percent of grade 3-5 FAY students scoring at proficiency or higher in Math will increase to 81% as measured by the Iowa Test of Basic Skills.

Climate Goals:

- Students and families will feel more comfortable supporting our academic goals as measured by the family survey.
- Students will be expected to exhibit S.T.A.R.S. behavior in all environments according to PBIS.



Building Staff

Licensed Professionals

32

Licensed Professional

1:11.0

Lowell

Support Staff

15

Staff to Student Ratio

1:11.8

District

Lowell Elementary Highlights

- Lowell S.T.A.R.S. (Stay Safe, Take Responsibility, Accept All, Respect Others, Success will Follow)
- Annual fall festival for families
- Literacy Night with Ronald McDonald
- Cinco de Mayo celebration for families
- Student Council
- Junior Achievement
- Teammates Mentoring
- Special Needs programming and services
- Title 1 reading staff– including Reading Recovery
- YMCA & YWCA extended care program
- Girl Scouts
- Date with Dad
- Read to Ride, family reading program



Engaged in Learning • Prepared for Success