

Orange Elementary School Annual Report 2010-2011



6028 Kimball Avenue ◊ Waterloo, IA 50701 Phone: 319-433-2880 ◊ Fax: 319-433-2888
Email: ErpeldingK@waterloo.k12.ia.us ◊ http://www.waterloo.k12.ia.us/schoolsites/orange/

Message from the Principal: Kenneth Erpelding ('10-'11) Teri Trask ('11-12)

Mission: Orange's Mission Statement is to create and maintain an environment that ensures every member of the school community reaches a high level of academic, social, emotional, and physical and aesthetic growth as determined by state and national standards. We commit to a comprehensive system of support to assure this outcome.

Vision: Engaged learners are surrounded by caring, friendly and knowledgeable adults who are devoted to providing for the needs of each student. The curriculum is well articulated and technology is infused within. Parents take an active role in their child's education by providing basic needs so their child is ready to learn. Character Counts traits and good work ethics are taught at home and school. Parents and school staff work together respectfully and cooperatively in school and community, with the vision of helping students be responsible and productive members of our society.

Focus:

- PBIS (Positive Behavior Intervention Support)
- IDM (Instructional Decision-Making)
- Six Pillars of Character: Trustworthiness, Respect, Responsibility, Fairness, Caring, Citizenship
- Student Achievement & Parental Involvement
- Staff: Child-oriented, Experienced, Collaborative
- Parents: Supportive, Strong OPA initiatives, Volunteers, 100% attendance for conferences
- Partners: Supportive, Collaborative
- UNI Collaboration: Mentoring, Basketball Program with KDP (Kappa Delta Pi), Elementary Partnering (Tutoring), Core Knowledge Class Field Experience, Student teachers/field



Partners in Education

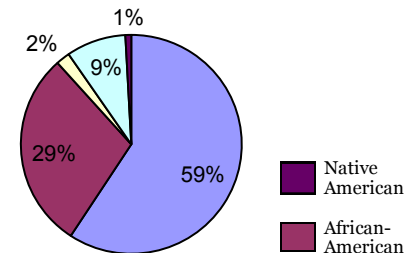
Partners in Education is a school-business partnership program that matches community organizations with schools to enhance academic and social growth.

The following businesses are Orange Elementary's Partners in Education:

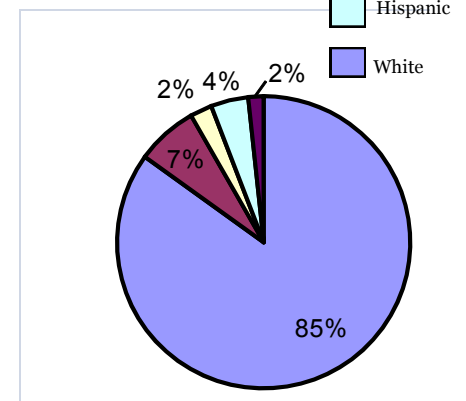
- Hawkeye Community College
- South Waterloo Church of the Brethren
- Mediacom
- Harmony House Health Care Center
- Cedar Valley Arboretum & Botanical Gardens
- Liberty Bank
- UNI KDP Honor Society

Diversity

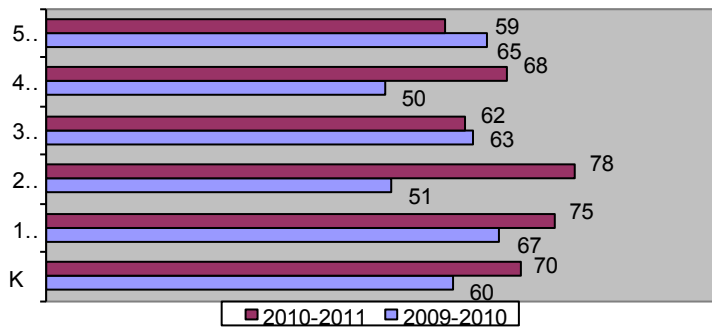
District %



Orange %



Enrollment



2010-2011 Average Class Size

	K	1st	2nd	3rd	4th	5th
Orange Elementary	17.5	25.0	26.0	20.7	22.7	19.7
District Elementary	20.2	21.1	21.1	22.0	22.4	23.3

Average Daily Attendance

Students

Orange Elementary	96.3%
District Elementary	95.5%

Conference Attendance

By Parents

	<u>08-09</u>	<u>09-10</u>	<u>10-11</u>
Orange	100%	100%	100%

Free or Reduced Lunch Eligibility

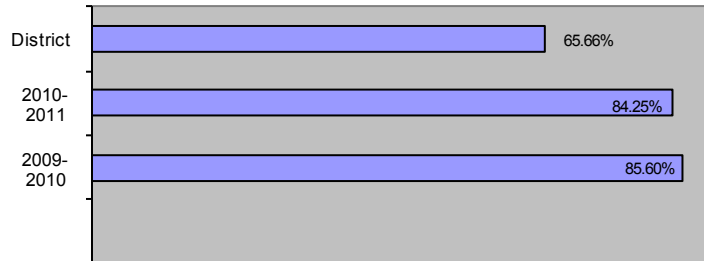
Orange Elementary	42.41%
District Average	62.03%

Student Mobility

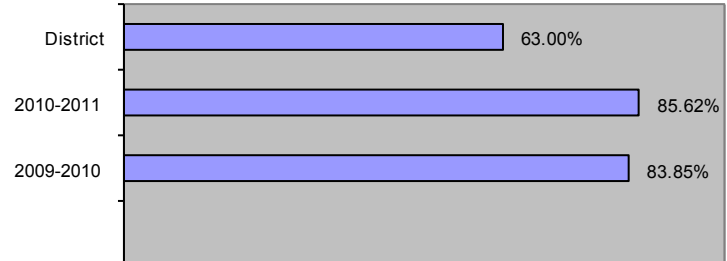
Students entering after Aug. 31, 2010 or leaving before May 30, 2011.

Orange Elementary	8.5%
District Elementary	13.58%

Reading Comprehension % Proficient



Math Comprehension % Proficient



Reading and Math Proficiency

Figures are based on average percent for grades 3-5. Students who score at or above the 41st percentile on the ITBS are considered "proficient." Our goal is to continue to increase the percentage of our students who meet this minimum standard.

Orange 2010-2011 Goal Report

Reading Goals:

- The percent of FAY (Full Academic Year) students in grades 3-5 as measured by ITBS Reading Comprehension will increase in proficiency from 82.6% to 90% on the Spring 2010 assessment.
- The subgroup for Reading Low SES will meet or exceed the state trajectory of 82%
- 100% of K-5 students will be proficient on the spring DRA2 (Developmental Reading Assessment) (proficiency level for K at 3; 1st at 16; 2nd at 28; 3rd at 38; 4th at 40; 5th at 50).
- 100% of students in grades 3-5 will score at the proficiency level on writing prompts used as a part of the SWH (Science Writing Heuristic) approach. The 5th grade students will show improvement as measured by the pre/post Cornell Critical Thinking Test.

Math Goals:

- The percent of FAY students in grades 3-5 as measured by the ITBS Math Total will increase in proficiency from 83.2% to 90% on the spring 2011 assessment.
- 100% of 1-5 students will be proficient on quarterly Basic Facts Assessments
- 100% of K-5 students will be proficient on End of Year Math Test.

Climate/Culture Goals:

- 100% of staff, students, and parents identify Orange Elementary as a school demonstrating an environment of mutual respect as measured by the end of year climate survey.
- Engage in the second year implementation process of PBIS (Positive Behavioral Intervention Supports).
- Decrease office referrals by 25%

Building Staff

<u>Licensed Professionals</u>	<u>Support Staff</u>
26	11
<u>Licensed Professional</u>	<u>Staff to Student Ratio</u>
1:15.1	1:11.8
Orange	District

Additional Learning Links

- English Language Learners
- Expanded Learning Program
- Six Pillars of Character Education
- Kids of Character Luncheons at Orange
- Computer Lab
- Internet/ e-mail/ cable access
- Student Council (Grades 3 through 5)
- Mayor's Run for 4th graders
- Service learning opportunities
- Special Needs
- Camp Ewalu outdoor education (5th Grade)
- Read-a-Million-Minutes Program
- R.S.V.P. services
- Junior Achievement opportunities
- Math Homework Night
- My Waterloo Days Parade with Partners in Education
- Earth Connections Science Club
- GLOBE SCHOOL (Global Learning and Observations to Benefit the Environment)
- 1st Waterloo School of Promise
- Site of 1st Junior Master Gardener Program
- Parental Involvement Plan
- Wetland Project
- Respect Luncheons at HCC (Grades 4 and 5)
- UNI KDP Partnerships with learning activities for students
- PBIS (Positive Behavior Intervention Supports)
- Promethean Boards
- IDM (Instructional Decision Making)



WATERLOO
Community School District